



# Corporate Presentation

Mar 2024

# Table of Contents

---

## 1. About K. Wah Group

## 2. Our Business

- Properties
- Entertainment & Leisure
- Hospitality
- Construction Materials

## 3. Corporate Social Responsibilities

# About K. Wah Group

# About K. Wah Group

- Established by Dr Lui Che-woo in 1955 in Hong Kong
- A diversified business portfolio encompassing properties, entertainment and leisure, hospitality and construction materials
- Market presence in Mainland China, Hong Kong, Macau, Southeast Asia and major cities in the world
- Over 200 subsidiaries
- Two Hong Kong-listed flagships: Galaxy Entertainment Group Limited (stock code: 00027; a constituent stock of Hang Seng Index) and K. Wah International Holdings Limited (stock code: 00173) with a total market capitalisation of over HK\$193.5 billion

**Properties**



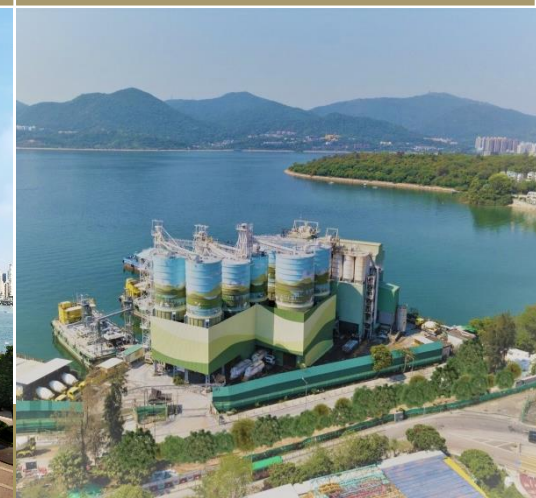
**Entertainment & Leisure**



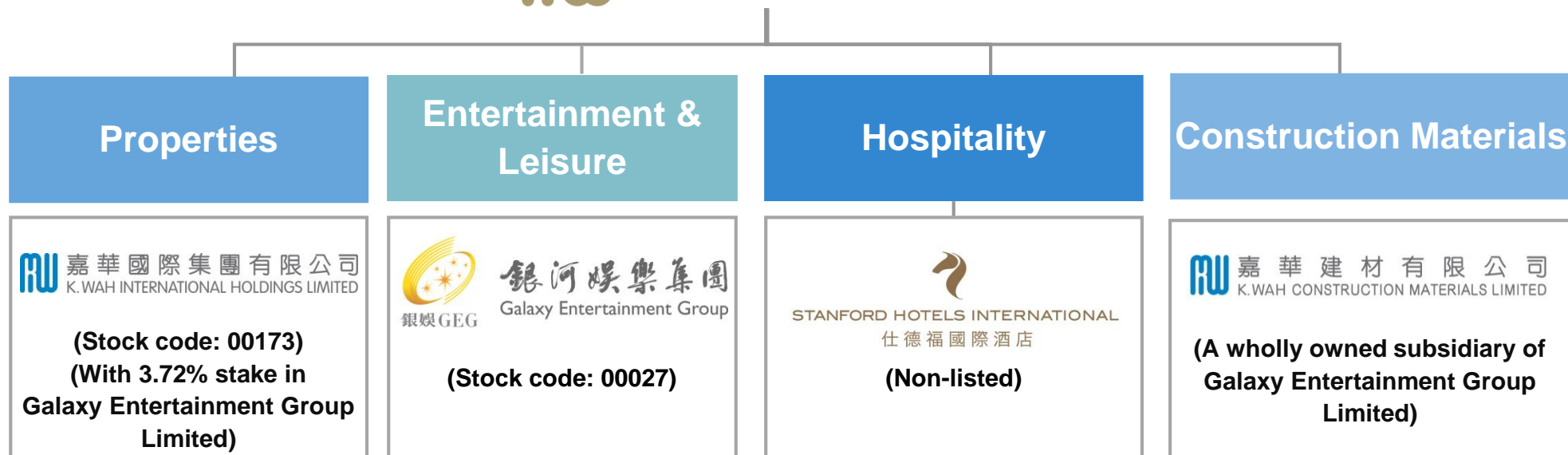
**Hospitality**



**Construction Materials**



# About K. Wah Group



# Chairman and Founder – Dr Lui Che-woo (1)

Dr Lui Che-woo,  
*GBM, MBE, JP, LLD, DSSc, DBA*



- Member of the 9<sup>th</sup> National Committee of Chinese People's Political Consultative Conference
- Selection Committee Member for the 1<sup>st</sup> Government of HKSAR and Member of the Election Committee of the Government of HKSAR
- Member of Election Committee Hotel Subsector for Legislative Council; Member of the Election Committee of the HKSAR in 2001, 2006, 2011 and 2016 and Member of the Steering Committee on MICE

- Founded the first K. Wah company in 1955
- A pioneer in Hong Kong's construction materials industry; embarked on property investments in 1960s; set sight on hotel business in 1980s and expanded his business into Mainland China in 1990s; ventured into Macau's gaming business in 2002
- Honoured as a Member of the Order of the British Empire by The Queen (MBE) in 1982; appointed as a Justice of the Peace (JP) in 1986; In 1995, an asteroid numbered 5538 discovered by the Purple Mountain Observatory of the Chinese Academy of Sciences was named as "Lui Che Woo Star"; awarded the Gold Bauhinia Star (GBS) in 2005 and the Grand Bauhinia Medal (GBM) in 2012 by HKSAR Government
- A philanthropist supporting various initiatives in education, medical care and hotel & tourism industries; pledged donations to educational institutions in Hong Kong, Mainland China and the US

# Chairman and Founder – Dr Lui Che-woo (2)

Dr Lui's business philosophy of prudence and innovation has brought him numerous accolades and honours over the years

2021	Tatler Asia - Asia's Most Influential 2021
2019	20 Persons in 20 Years: the Most Valuable Persons of Macau's Tourism and Leisure Industry from 1999 to 2019 - Most Valuable Person
2018	25 <sup>th</sup> World Travel Awards - Outstanding Leadership in Social Responsibility Award
2017	Peking University Outstanding Educational Contribution Award
2015	2 <sup>nd</sup> Global Conference of the Cantonese - Top 10 Outstanding Cantonese
	22 <sup>nd</sup> World Travel Awards - Lifetime Achievement Award
2014	The Asian Awards - Entrepreneur of the Year
	International Gaming Awards - Outstanding Contribution Award
2013	13 <sup>th</sup> China Hotel Golden Horse Award - Lifetime Achievement Award
2012	Grand Bauhinia Medal by the Government of the Hong Kong Special Administrative Region
	2012 Asia Hotel Awards - Outstanding Achievement of the Year by Asia Hotel Forum
	Asia Pacific Entrepreneurship Awards 2012 - Lifetime Achievement Award by Enterprise Asia
	Certificate of Honor by the Mayor of San Francisco, the US



# Chairman and Founder – Dr Lui Che-woo (3)

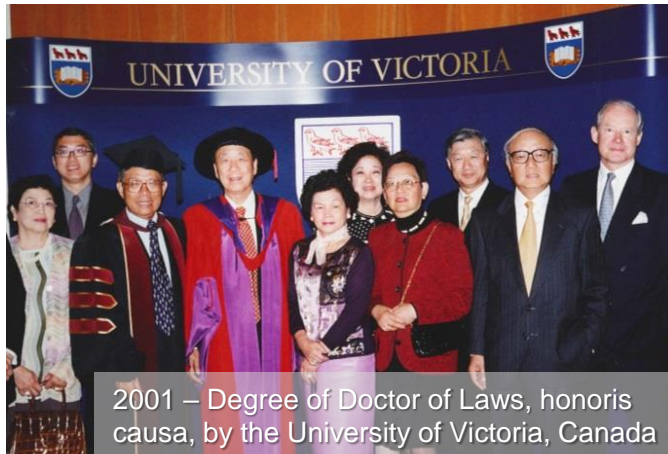
Dr Lui's business philosophy of prudence and innovation has brought him numerous accolades and honours over the years

2011	All Leaders - Lifetime Achievement Award
	Diamond Award by <i>Macau Tatler</i>
2007	Business Person of the Year in DHL/SCMP Hong Kong Business Awards
	Lifetime Achievement Award by American Academy of Hospitality Sciences
2005	Gold Bauhinia Star by the Government of the Hong Kong Special Administrative Region
1997	Contribution to the Betterment of Da Ze Award
1996	Outstanding Contribution Award in Guangzhou
	Outstanding Foreign Investor Award (Guangdong Province)
1995	Naming of "Lui Che Woo Star" Asteroid No. 5538 (Discovered by the Purple Mountain Observatory of the Chinese Academy of Sciences)
1994	Citizen of Honor (Nanjing)
1993	Citizen of Honor (Guangzhou)
	Citizen of Honor (Jiangmen)
1986	Justice of The Peace
1982	Member of The Order of The British Empire



# Chairman and Founder – Dr Lui Che-woo (4)

Dr Lui was awarded honoris causae from various local and overseas universities for his contributions to tertiary education and social development



2001 – Degree of Doctor of Laws, honoris causa, by the University of Victoria, Canada



2002 – Doctor of Social Science, honoris causa, by the Chinese University of Hong Kong



2016 – Doctor of Social Sciences, honoris causa, by the University of Hong Kong



2004 – Degree of Honorary Doctor of Laws by Concordia University, Canada



2005 – Doctor of Business Administration, honoris causa, by the Hong Kong Polytechnic University



2002 – Honorary University Fellowship, by the University of Hong Kong

# LUI Che Woo Prize – Prize for World Civilisation



Dr Lui established the LUI Che Woo Prize – Prize for World Civilisation. It is the first of the kind cross-sector international prize honouring and recognizing individuals or organizations who have unconditionally promoted world civilisation. The laureate in each of the three prize categories below will be presented with a cash award of HK\$20 million (around US\$2.56 million):

- Sustainability Prize
- Welfare Betterment Prize
- Positive Energy Prize



[Prize Video](#)

The Prize website: <http://www.luiprize.org/>



# LUI Che Woo Prize – Prize for World Civilisation



[The 1st Inaugural Prize Presentation Ceremony](#)



[Prize Presentation Ceremony 2017](#)



[Prize Presentation Ceremony 2018](#)



[Prize Presentation Ceremony 2019](#)

The LUI Che Woo Prize – Prize for World Civilisation holds its Prize Presentation Ceremony in Hong Kong, recognising the significant contributions to world civilisation by the three inaugural laureates



LUI Che Woo Prize 2018 Laureates: (from left) Mr Hans-Josef Fell, Sustainability Prize Laureate; Dr Lui Che-woo, Prize Founder; Dr Rukmini Banerji, CEO of Pratham Education Foundation, Positive Energy Prize Laureate; Prof Petteri Taalas, Secretary-General of the World Meteorological Organization, Welfare Betterment Prize Laureate



Inaugural Prize Presentation Ceremony of LUI Che Woo Prize was held in 2016

# Laureates of LUI Che Woo Prize – Prize for World Civilisation

The specific area of focus and laureates of the Prize from 2016 to 2019 are:

Year	Prize Category	Specific Area of Focus	Laureates
2016	Sustainability Prize	World food supply: safety and security	Professor Yuan Long-ping
	Welfare Betterment Prize	Treatment and/or control of epidemics, infectious diseases or chronic illnesses	Médecins Sans Frontières
	Positive Energy Prize	Individuals or organisations whose behaviour and achievement inspire, energise and give hope to others	Mr James Earl “Jimmy” Carter, Jr.
2017	Sustainability Prize	Prevention of climate change	Mr Xie Zhen-hua
	Welfare Betterment Prize	Alleviation of poverty	Landesa
	Positive Energy Prize	Promotion of harmony among diverse groups	International Paralympic Committee
2018	Sustainability Prize	Development of renewable energy	Mr Hans-Josef Fell
	Welfare Betterment Prize	Reduction of the impacts of natural disasters	World Meteorological Organization
	Positive Energy Prize	Elimination of illiteracy	Pratham Education Foundation
2019	Sustainability Prize		The Nature Conservancy
	Welfare Betterment Prize		Dr Jennifer A. Doudna
	Positive Energy Prize		Ms Fan Jin-shi



# Development History of K. Wah Group

Our steadfast pursuit of quality, our belief in innovation and our quest for excellence drive K. Wah ever forward

1955

Dr Lui Che-woo founded the first K. Wah Company to undertake infrastructure works in East Kowloon, including excavation, land reclamation and road construction, laying the foundation for Hong Kong's future development



1964



K. Wah obtained the first quarrying rights in Hong Kong located at Anderson Road (Quarry 1), applying automated machinery to open up a new era of safe, effective and mechanized quarrying operations



1981

The Group's first flagship hotel, Holiday Inn Harbour View (now known as InterContinental Grand Stanford Hong Kong) was opened and became one of the first five-star hotels in Tsimshatsui East



1991

K. Wah Centre, the Group's headquarters in North Point, was completed and became the first grade-A office tower in Hong Kong with a private pier



K. Wah Construction Materials Limited (formerly known as International PipeLimited,

stock code: 00027; now known as Galaxy Entertainment Group Limited); was listed in Hong Kong as a major one-stop construction materials manufacturer in the local market

1997



K. Wah entered into an agreement with the Hong Kong SAR government for the rehabilitation of Anderson Road Quarry and its transformation into a multi-purpose land

1962

K. Wah made debut in the private property market with investment in a residential project at Cha Kwo Ling Road comprising eight blocks of six-storey buildings



1974



Black's Link Villas at Black's Link in Island South. Comprising eight standalone luxury houses, one of them was sold for a record-high unit price

The Group pioneered the development of luxurious villa-type houses in Hong Kong with the

1983

K. Wah Concrete Company Limited was incorporated to



develop the ready mixed concrete-related construction materials business. In tandem with China's economic reform, we expanded our construction materials business to Shenzhen and Zhuhai

1987



K. Wah International Holdings Limited (formerly known as K. Wah Stones Holdings Limited, stock code: 00173) was listed on the Stock Exchange of Hong Kong

1993



Huangpi Quarry was built by K. Wah, becoming the largest quarry in Guangzhou. Meanwhile, the Group made debut in Mainland China property market by participating in Guangzhou's first urban renewal project while becoming one of the first Hong Kong developers to establish a foothold in the Shanghai market

# Development History of K. Wah Group (cont')

Our steadfast pursuit of quality, our belief in innovation and our quest for excellence drive K. Wah ever forward

2002



GEG was granted a gaming concession by the Macau SAR Government, followed by the opening of its first City Club casino in 2004

2006



StarWorld Hotel, the first five-star hotel and casino of GEG, opened for business

2012

Dr Lui Che-woo was awarded the Grand Bauhinia Medal by the Hong Kong SAR Government



2014



GEG celebrated its 10th anniversary in operation and announced the establishment of a HK\$1.3 billion charitable foundation

2016

LUI Che Woo Prize – Prize for World Civilisation Inaugural Prize Presentation Ceremony was held



2017



Over 53 years of quarrying and 20 years of rehabilitation, Anderson Road Quarry was officially returned to the government

2000

Since 2000, KWCM has formed strategic partnerships with leading iron and steel enterprises to manufacture Ground Granulated Blastfurnace Slag and other eco-friendly construction materials in support of the government's policy for sustainable development



2005



Shanghai K. Wah Centre, the Group's headquarters in Mainland China was completed

2011

Phase 1 of Galaxy Macau™, a mega integrated resort of GEG, was opened to delight guests with a brand new entertainment and leisure experience



KWIH's Crowne Plaza Guangzhou Huadu was opened as the Group's first five-star hotel in Mainland China

2013

On 17 June, GEG was admitted as one of the 50 constituent stocks of Hang Seng Index and became the world's third largest gaming operator by market capitalization



2015



Stanford Residences, the first high-end serviced apartment brand established by the Group, was launched in Shanghai



Dr Lui Che-woo established the LUI Che Woo Prize – Prize for World Civilisation in Hong Kong



The Group celebrated its 60th anniversary



# Development History of K. Wah Group (cont')

Our steadfast pursuit of quality, our belief in innovation and our quest for excellence drive K. Wah ever forward

2018



KWCM acquired the south runway project of Hong Kong International Airport providing over 100,000 tons of asphalt

2022



KWIH celebrates the 30th Anniversary of the Group's presence in Mainland China



Galaxy Casino, S.A., a member of GEG, is awarded a concession for operation of casino games of fortune by the Macau SAR Government. The concession will be valid from January 1, 2023, to December 31, 2032

2019



CITTA  
RESIDENCES  
臻逸

Citta Residences, another new brand for serviced apartment launched



CRESLEIGH  
嘉英物業

Cresleigh Property, a brand new high-end property management under KWIH officially launched

2023



GEG inaugurates Phase 3 projects at Grand Opening Ceremony

# Our Business

# Properties



# An integrated property developer and investor

- The Group has over 60 years of experience in the property industry
- Covering large-scale residential communities and comprehensive development projects such as premium residential developments, Grade-A office towers, hotel and serviced apartments, retail premises and offering property management service
- Investments spanning across Hong Kong, Mainland China and Southeast Asia

## Exquisite residence



The Palace, Shanghai



SIERRA, Nanjing



Grand Summit, Shanghai



J Wings, Guangzhou

## Hotel and serviced apartment



Crowne Plaza Guangzhou Huadu



Stanford Residences, Shanghai

# An integrated property developer and investor

## Office



Vertical Sq, Hong Kong



K. Wah Centre, Shanghai

## Retail complex



SOHO east®, Hong Kong



J SENSES, Shanghai



Cove Gala, Dongguan

## Industrial/ commercial property



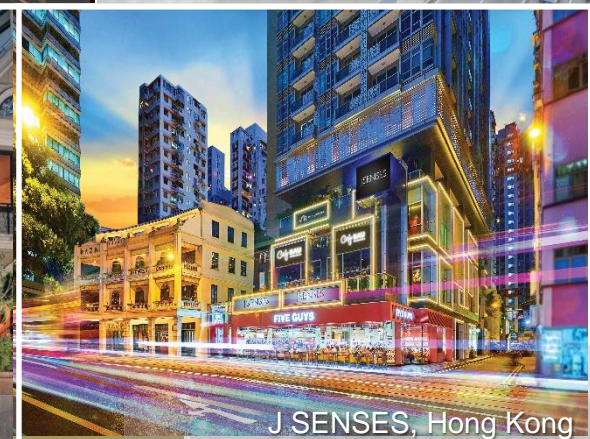
EDGE, Shanghai



THE FACTORY, Hong Kong



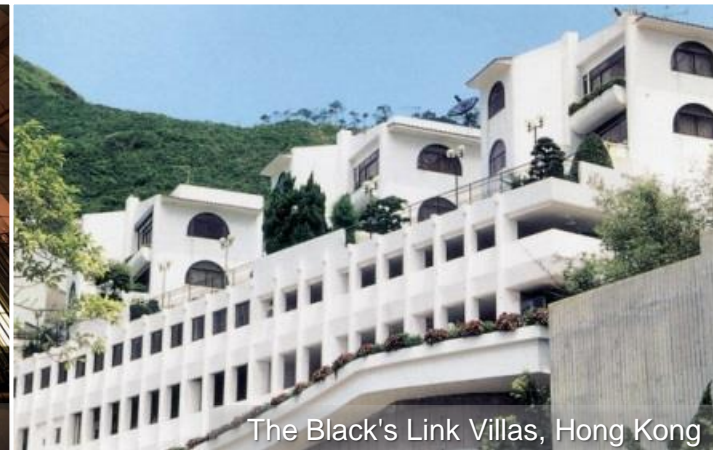
Palace Lane, Shanghai



J SENSES, Hong Kong

# An integrated property developer and investor

- The Group embarked on Hong Kong's property market in 1960s and invested in a residential project on Cha Kwo Ling Road in 1962
- In 1974, it built Black's Link Villas, the first luxury villa-type project in Hong Kong located at Black's Link, Island South
- With a strong commitment to quality, innovation and pragmatism, it focuses on the development of high quality and unique properties with the spirit "K. Wah Plus"



# An integrated property developer and investor

- In 1990s, the Group ventured into Mainland China market
- Participated in the first urban renewal project in Guangzhou, transforming the old neighbourhood into a modern residential cum commercial area – Parkview Place which is still deemed as the landmark in Guangzhou
- One of the earliest Hong Kong enterprises to set foot in the Shanghai property market; acquired several prime sites in the CBD and established itself as a premier developer of exquisite and niche projects



Parkview Place, Guangzhou



Windermere, Shanghai



The Peak, Nanjing

# An integrated property developer and investor

## KWIH – the Group's listed property arm

- K. Wah International Holdings Limited (“KWIH”; stock code: 00173), the property flagship of K. Wah Group was listed in Hong Kong in 1987
- Strategic focus on Hong Kong, the Yangtze River Delta and the Pearl River Delta regions, develop large scale residential communities and comprehensive development projects
- Reputed for premium residential developments, Grade-A office towers, hotel and serviced apartments, retail premises and offering property management service
- Committed to building unique and exquisite projects earning a host of international accolades
- Strive to enhance shareholder value by adopting a prudent and progressive strategy



K. Wah Plaza, Huadu, Guangzhou

A composite development with hotel, office, premium residential tower and apartment

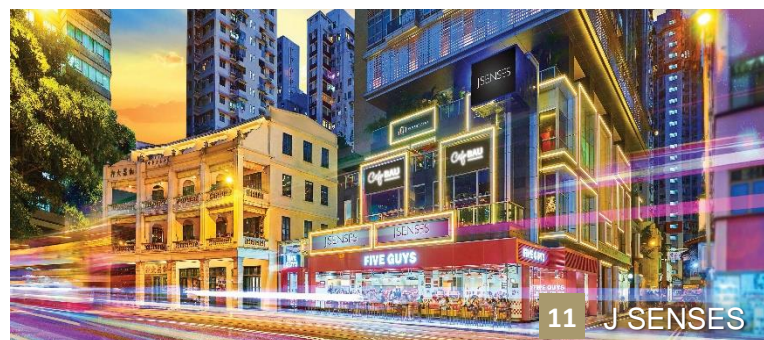
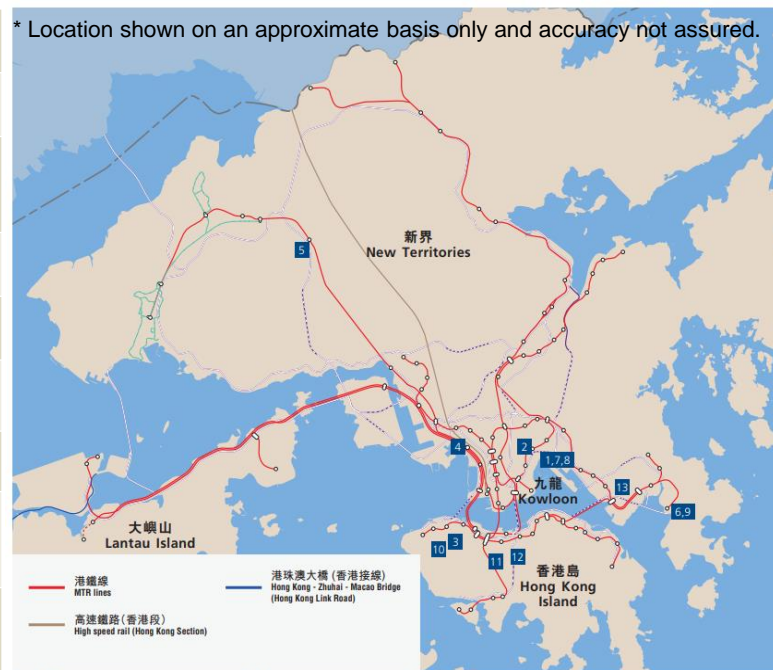


Site 2020G72, Hexi New Town, Jianye District, Nanjing

A comprehensive development with residence, offices, hotel, serviced apartment and commercial premise

# Major projects - Hong Kong

1	K. Summit
2	2 Grampian Road
3	Inland Lot No. 8872, Hospital Road
4	GRAND VICTORIA
5	GRAND MAYFAIR
6	Villa Garda
7	KT Marina
8	New Kowloon Inland Lot No. 6554, Kai Tak
9	LOHAS Park Package Thirteen Property Development
10	30 Po Shan Road
11	J SENSES
12	Chantilly
13	Commercial Complex at Twin Peaks



# Major projects - Yangtze River Delta



The Palace III – Le Haut, Shanghai



Cavendish, Nanjing



Avanti, Suzhou



EDGE, Shanghai



Navale, Shanghai



WYSH, Shanghai

# Major projects – Pearl River Delta



# Stanford Residences

## – A premium serviced apartment brand

- The first high-end serviced apartment brand established by K. Wah Group, with the philosophy of “Where Enchanted Living Comes Together”
- Devoted to creating high quality apartments to elevate architecture and environment in the modern age
- Shanghai: Stanford Residences Jing An, Stanford Residences Xu Hui; Hong Kong: Stanford Residences Victoria Harbour



Stanford Residences Victoria Harbour



Stanford Residences Jing An



Stanford Residences Victoria Harbour



Stanford Residences Xu Hui

# Cresleigh Property Management

## – A High-end residential property management model

- Innovative management and global best practices in boutique hospitality combined
- Delivered exceptional strategic and tactical property management services in general to premium residential buildings, commercial facilities, office towers and real estate complexes



# Entertainment & Leisure



# A developer, owner and operator of integrated entertainment and resort facilities

- Galaxy Entertainment Group (“GEG”, stock code: 00027, a constituent stock of Hang Seng Index) is one of the three original concessionaires in Macau and one of the world’s leading resorts, hospitality and gaming companies. It primarily develops and operates a large portfolio of integrated resort, retail, dining, hotels and gaming facilities in Macau
- Embracing the Asian Heart philosophy, GEG is committed to offering world-class facilities to support Macau’s sustainable and diversified development objectives
- GEG operates three flagship destinations in Macau: on Cotai, Galaxy Macau™, one of the world’s largest integrated destination resorts, and the adjoining Broadway Macau™, a unique landmark entertainment and food street destination; and on the Peninsula, StarWorld Hotel, an award winning premium property



# StarWorld Hotel

- GEG's first world-class five-star luxury hotel in the heart of Macau, offering breathtaking views of the city and front-row seats to international events
- StarWorld Hotel embodies Asian hospitality and thoughtful service, providing discerning guests with the ideal destination to embark on a prestigious star experience of refined luxury
- Luxury rooms and renowned for its attentive service earning a host of international accolades, including Hong Kong and Macau with Michelin Top Class Comfort Hotel for 8 consecutive years, and The Supreme Award of Asia's Best Hotel for Catering Services
- StarWorld Hotel is home to 10 renowned restaurants. Among them is Feng Wei Ju, the only Hunan and Sichuan restaurant in Hong Kong and Macau with Two Michelin Stars for 7 consecutive years



# Galaxy Macau: The World-class Luxury Integrated Resort

- As GEG's flagship project in Cotai, Galaxy Macau™ Phase 1 and Phase 2, opened their doors in 2011 and 2015 respectively. Together with Broadway Macau™, the mega integrated resort measures over 1.1 million sqm
- Delivering unparalleled “World Class, Asian Heart” service with an eclectic mix of Orient and Western cultures
- Introducing new facilities and world-class hotel brands to support Macau as a “World Centre of Tourism and Leisure”



# Galaxy Macau

- 8 world-class, luxury hotel brands under one roof – Banyan Tree Macau, Galaxy Hotel™, Hotel Okura Macau, JW Marriott Hotel Macau, The Ritz-Carlton, Macau, Broadway Hotel, Raffles at Galaxy Macau and Andaz Macau. Together offers around 5,000 rooms, suites and villas of five-star accommodation and lavish spa experiences
- 2 award-winning spas: Banyan Tree Spa Macau and The Ritz-Carlton Spa, Macau



Banyan Tree Macau



Galaxy Hotel



Hotel Okura Macau



JW Marriott Hotel  
Macau



The Ritz-Carlton, Macau



Broadway Hotel



Raffles at  
Galaxy Macau



Andaz Macau



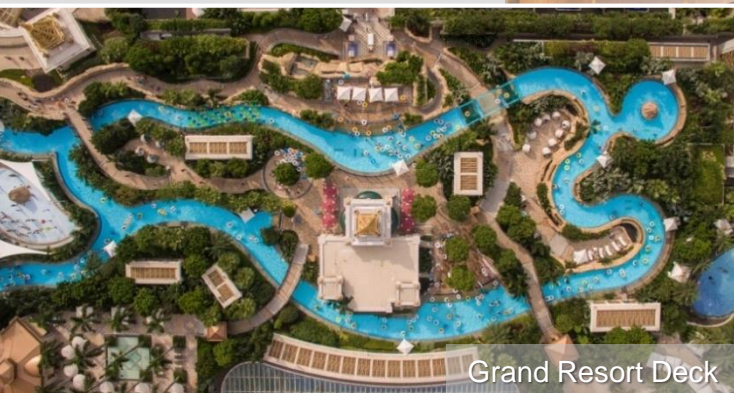
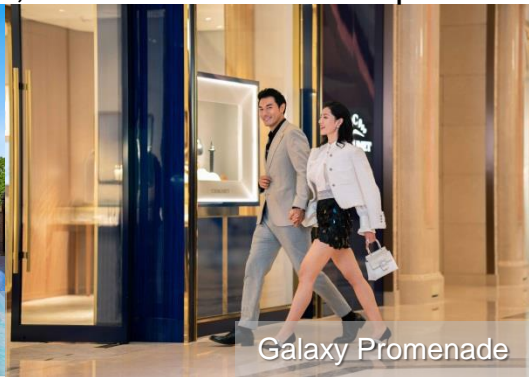
Banyan Tree SPA Macau



The Ritz-Carlton Spa,  
Macau

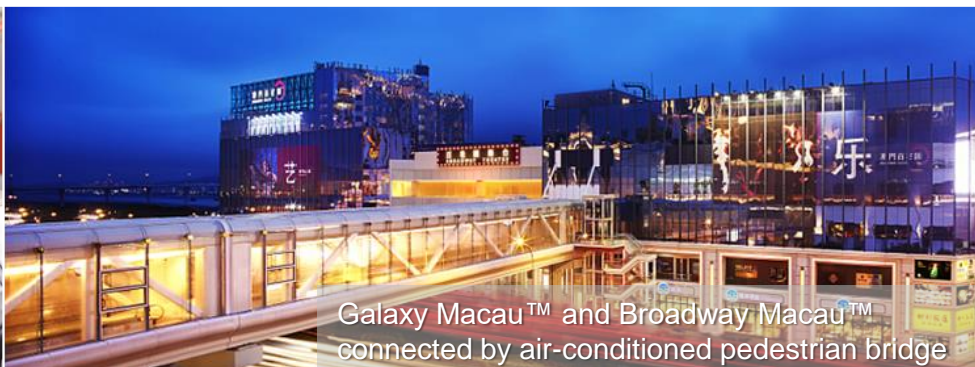
# Galaxy Macau

- Galaxy Promenade features the latest in fashion and curated experiences, with more than 200 luxury brands at the flagship stores and lifestyle boutiques, it is the hottest shopping destination in Macau
- Over 120 dining options, from Michelin dining to authentic delicacies
- Grand Resort Deck offers the world's longest Skytop Adventure Rapids at 575 metres and the world's largest Skytop Wave Pool and white sand beach
- Galaxy Cinemas, a luxurious 10-theatre 3D Cineplex with a groundbreaking 4K laser projection system
- One-of-a-kind deluxe entertainment lounge CHINA ROUGE
- A versatile selection of spaces across all of the resort's world-class luxury hotels, the ideal location for any event from business meetings, conferences and banquets to special events, private parties and wedding receptions.



# Broadway Macau

- The Broadway Theatre, with around 2,500 seats, showcases the best up-close-and-personal entertainment and performances
- Broadway Food Street features authentic local dishes, Asian favorite restaurants and roadside hawker stalls, striving to retain the traditional characteristics of Macau
- Introduction of local eateries and retail brands to Broadway Food Street, with a view to spurring the growth of SMEs



# Galaxy Macau - New development



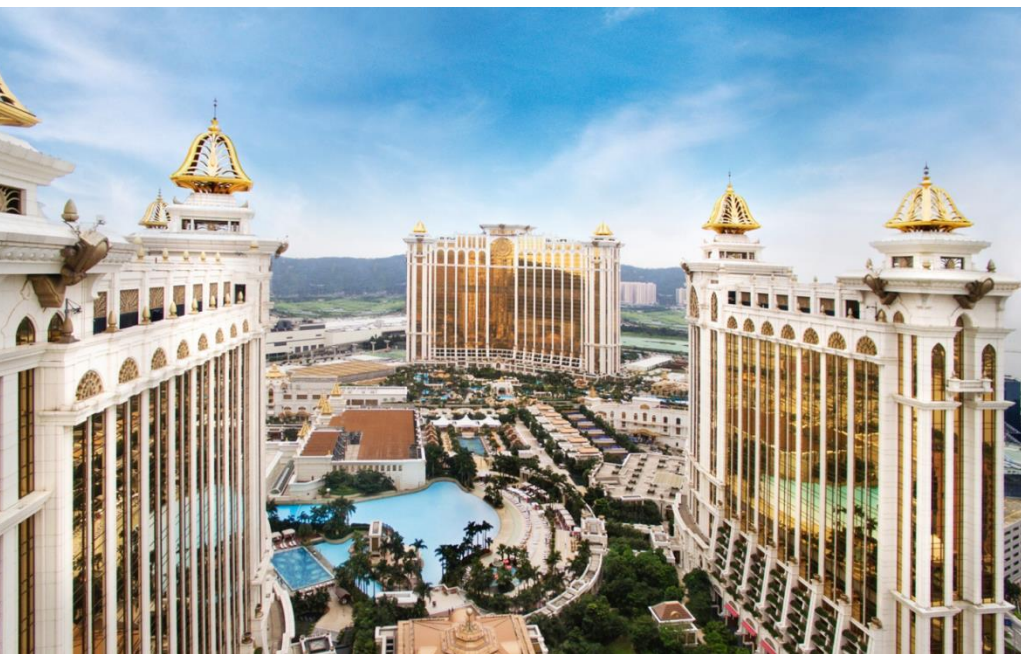
- When Phases 3 & 4 of its Cotai landbank are completed, GEG's footprint on Cotai will double to more than 2 million square metres
- Galaxy Macau™ welcomes Raffles at Galaxy Macau, the latest chapter of the legendary brand that has set the standard in luxury hospitality for more than 130 years. The integrated resort is also unveiling a brand new chapter with the highly anticipated openings of the Galaxy International Convention Center (GICC) with a total MICE space of 40,000 sqm, a 16,000-seat Galaxy Arena and Andaz Macau with approximately 700 rooms and suites
- GEG is progressing plans for its Hengqin project and we are also expanding our focus beyond Hengqin and Macau to potentially include opportunities within the rapidly expanding Greater Bay Area. These projects will help GEG develop and support Macau in its vision of becoming a World Centre of Tourism and Leisure

# Galaxy Macau - Project overview

Galaxy Macau	Phase 1	Phase 2	New development
Completion	May 2011	May 2015	2023-2026
Gross Floor Area (sqm)	550,000	450,000	1,000,000
No. of rooms	Banyan Tree Macau (about 260) Galaxy Hotel™ (about 1,500) Hotel Okura Macau (about 500)	JW Marriott Hotel Macau (about 1,100) The Ritz-Carlton, Macau (about 250) Broadway Hotel (about 320)	Raffles at Galaxy Macau (about 450) Andaz Macau (about 700) More under planning
Meeting, events & banquet (capacity)	Among 6 world-class luxury hotels, the largest meeting space can accommodate up to 2,500 guests		<ul style="list-style-type: none"> <li>● Galaxy International Convention Center with a total MICE space of 40,000 sqm</li> <li>● A 16,000-seat Galaxy Arena, the largest indoor arena in Macau</li> </ul>
Retail area (sqm)	100,000		Under planning
No. of brands	Over 200 world-renowned luxury fashion and lifestyle brands		Under planning
Facilities	<ul style="list-style-type: none"> <li>● Macau's most luxurious Cineplex with 3D technology and 4K laser projection system Galaxy Cinemas</li> <li>● One-of-a-kind deluxe entertainment lounge CHINA ROUGE</li> <li>● Grand Resort Deck, featuring the world's largest Skytop Wave Pool</li> <li>● Banyan Tree Spa Macau</li> </ul>	<ul style="list-style-type: none"> <li>● The world's longest Skytop Adventure Rapids at 575 m</li> <li>● The world renowned spa brand - The Ritz-Carlton Spa, Macau</li> </ul>	<ul style="list-style-type: none"> <li>● Including hotel, dining, MICE, entertainment and gaming</li> </ul>

# International opportunities

To further support GEG's international expansion ambitions, GEG has announced the strategic partnership with Monte-Carlo SBM, which includes a mutual commitment to enhance the respective businesses and brands of each company and to work together on the development and operation of entertainment businesses including Integrated Resort ("IR") projects in the Asia-Pacific region



Galaxy Entertainment Group



Société Anonyme des Bains de Mer et du Cercle  
des Etrangers à Monaco ( "Monte-Carlo SBM" )

# Hospitality



# A starred hotel owner and developer

- With 40 years of experience in hospitality industry, the Group operates as a franchised chain with world renowned hotel brands. Its first five-star flagship, InterContinental Grand Stanford Hong Kong was opened in 1981
- Owns and manages hotels and serviced apartment projects in Hong Kong, Macau, Mainland China and major cities in the world



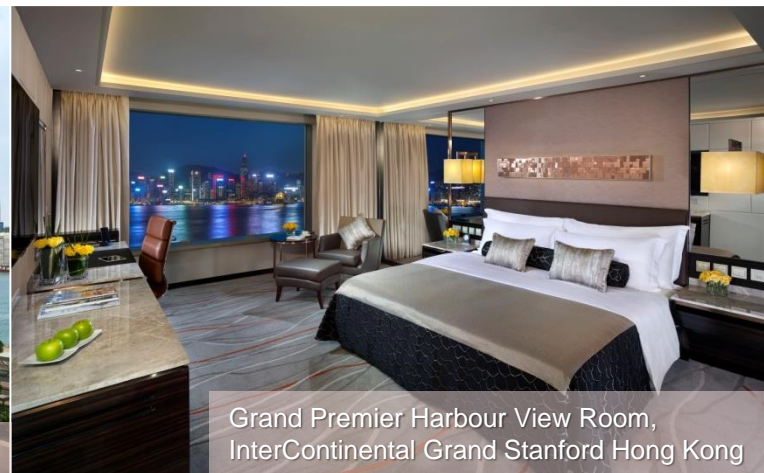
Stanford Hotel



Stanford Hillview Hotel



InterContinental Grand Stanford Hong Kong



Grand Premier Harbour View Room,  
InterContinental Grand Stanford Hong Kong



Crowne Plaza Guangzhou Huadu



Award-winning restaurant Hoi King Heen,  
InterContinental Grand Stanford Hong Kong



Theo Mistral by Theo Randall,  
InterContinental Grand Stanford Hong Kong

# Overview of the Group's hotels

Location		Name	Brand	No. of rooms/ units	Owner
Hong Kong		InterContinental Grand Stanford Hong Kong	InterContinental	572	Stanford Hotels International
		Stanford Hillview Hotel	Stanford	178	
		Stanford Hotel Hong Kong	Stanford	194	
		Stanford Residences Victoria Harbour	Stanford Residences	57	
Mainland China	Guangzhou	Crowne Plaza Guangzhou Huadu	Crowne Plaza	299	K. Wah International Holdings Limited
	Shanghai	Stanford Residences Jing An	Stanford Residences	129	
	Shanghai	Stanford Residences Xu Hui	Stanford Residences	119	
Macau		StarWorld Hotel	StarWorld	500	Galaxy Entertainment Group Limited
		Banyan Tree Macau	Banyan Tree	about 260	
		Galaxy Hotel™	Galaxy Macau™	about 1,500	
		Hotel Okura Macau	Okura	about 500	
		JW Marriott	JW Marriott	about 1,100	
		The Ritz-Carlton, Macau	Ritz-Carlton	about 250	
		Broadway Hotel	Broadway Macau™	about 320	
		Raffles at Galaxy Macau	Raffles	about 450	
		Andaz Macau	Andaz	about 700	

# Construction Materials



# A one-stop integrated eco-friendly construction materials supplier

Construction materials business, the cornerstone of K. Wah Group, is a one-stop integrated eco-friendly construction materials supplier upholding the principle of “Construction for the Betterment of the Country”, with business operations in Hong Kong, Macau and over a dozen major cities and industrial hubs in Mainland China

Guangdong Province: Shenzhen, Shaoguan, Hong Kong, Macau

Yunnan Province: Baoshan, Puer, Qujing, Anning, Zhaotong

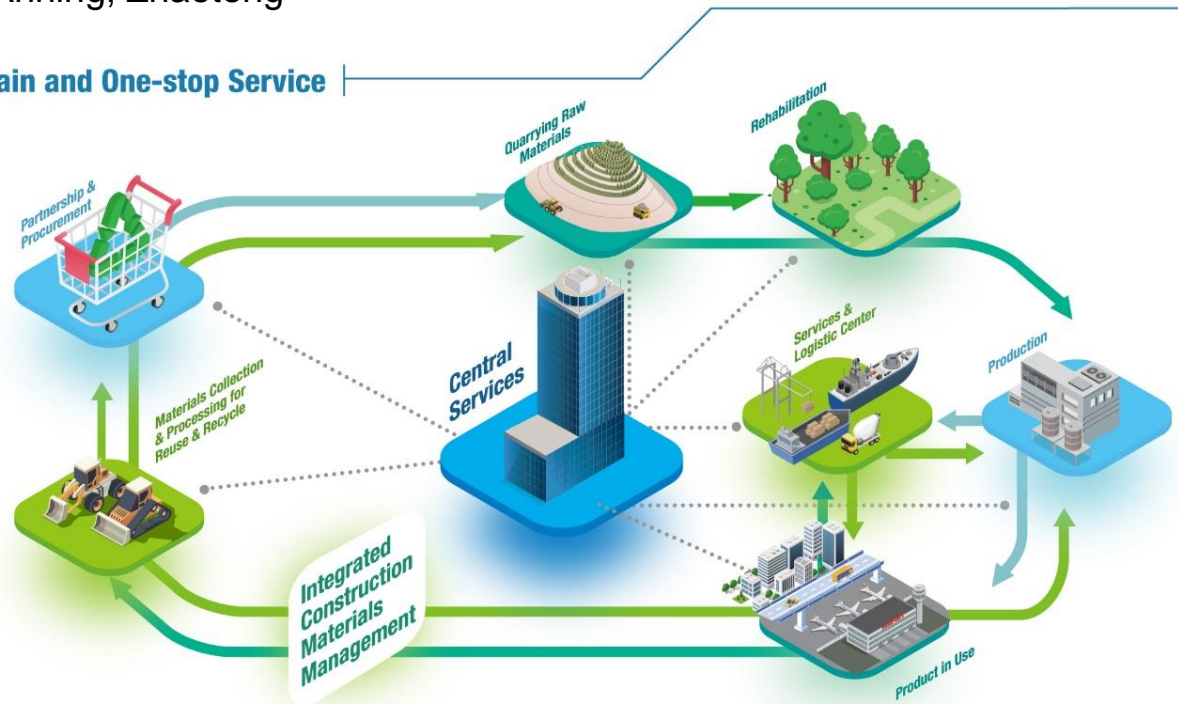
Jiangsu Province: Nanjing

Anhui Province: Mananshan

Hubei Province: Ezhou

Hebei Province: Qianan

## Value Chain and One-stop Service



# A one-stop integrated eco-friendly construction materials supplier

Supply diversified construction materials to numerous large-scale infrastructure projects in Hong Kong, Macau and Mainland China

## Annual production capacity of construction materials

Ground Granulated Blastfurnace Slag – 14 million tonnes

Aggregates – 16 million tonnes

Cement – 12 million tonnes

Ready mixed concrete – 4 million m<sup>3</sup>

Asphalt – 400,000 tonnes

Eco-blocks & pavers – 50 million pieces

Precast concrete pipes – 120,000 tonnes

Precast concrete piles – 1 million metres



Supply construction materials to major infrastructure projects, e.g. Shanghai Pudong International Airport, highways and Hong Kong International Airport

# A pioneer in the quarrying industry

Aggregate production reaching 16 million tonnes per annum



- In 1964, the Group became the first private corporation in Hong Kong to be awarded quarrying rights of Anderson Road Quarry 1
- In 1978, the Group secured the quarrying rights of Anderson Road Quarry 1 and 2, making it the largest quarry in Hong Kong
- In 1997, it entered into an agreement with the Hong Kong Government for the rejuvenation and rehabilitation of Anderson Road Quarry
- In 2017, the rehabilitation project was completed and returned to the Hong Kong Government on 31 July
- Apart from restoring the natural habitat of the quarry, the project created a site of about 40 hectares for urban development, laying the foundation for the future development of the new community in East Kowloon



# A pioneer in the quarrying industry

## Aggregate production reaching 16 million tonnes per annum



- The Group entered into Mainland China in 1993 and built Huangpi Quarry, the largest of its kind in Guangzhou
- In 2011, a modernized and environmental-friendly mega quarry with annual production capacity of 6 million tonnes located at Huidong, Guangdong was built to supply quality aggregates to Hong Kong
- The advanced management system, production techniques and decades of experiences from ARQ are also applied in Huidong to achieve environmental quarrying
- In 2020, got the highest votes among the Top 20 National High Quality Green Mines



# Strategic partnerships with sizable iron and steel enterprises

In line with China's direction of energy saving, emission reduction and sustainable development, the Group has established strategic partnerships with leading iron and steel enterprises to produce eco-friendly construction materials



Kunming Iron & Steel Group



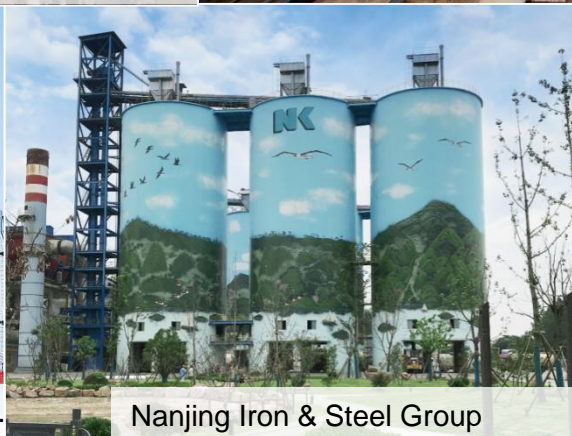
Beijing Shougang



Anhui Maanshan Iron & Steel Group



Hubei Echeng Iron & Steel Co.



Nanjing Iron & Steel Group



Guangdong Shaoguan Iron & Steel Group



Guizhou Shougang Shuicheng Iron & Steel Group

# One of the largest GGBS manufacturers in Mainland China

- Provide green solutions for iron and steel enterprises and started to produce eco-friendly construction materials Ground Granulated Blastfurnace Slag (GGBS) in 2000
- The waste generated from the iron & steel production processes is transformed into GGBS which is beneficial to enhancing the quality of concrete
- KWCM's annual GGBS capacity is 14 million tonnes, making it one of the largest green construction materials producers in Mainland China

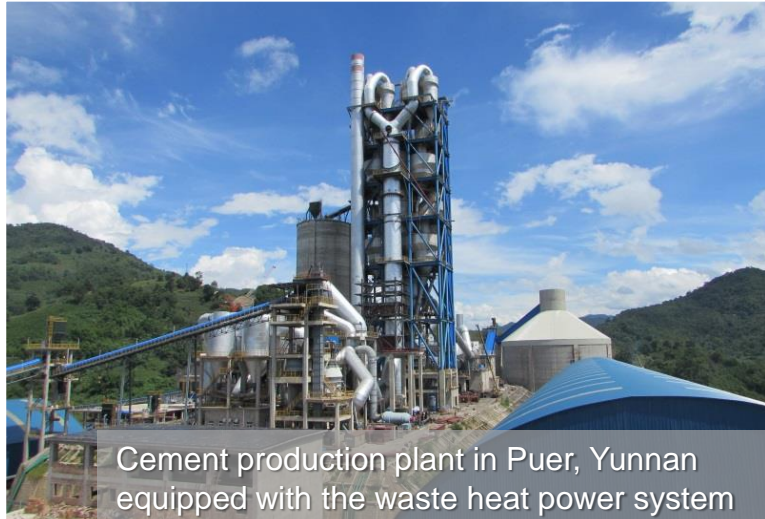


Guangdong Shaogang K. Wah New Materials Co., Ltd.

## Green Solutions

Compared with the same amount of cement, 14 million tonnes of GGBS can reduce 12 million tonnes of carbon emission; Remnant heat utilization at cement plant can retrieve 240 million units of electricity to save 76,000 tonnes of standard coal. This is equivalent to the annual electricity consumption by a population of 59,000 in Mainland China.

# Cement production base with waste heat power system



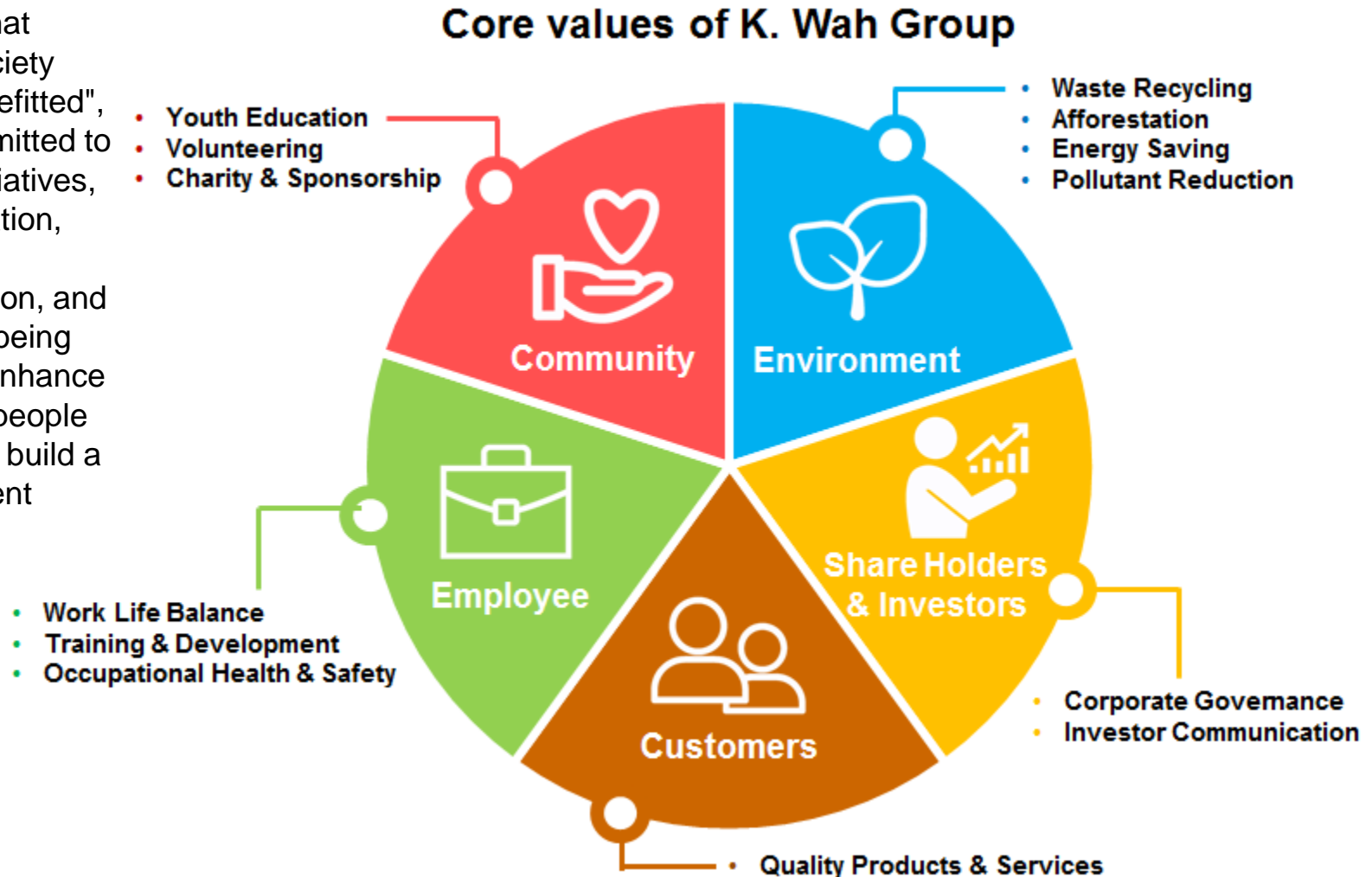
- Annual cement production capacity of 12 million tonnes
- Upholding the economic development principle of low-carbon emission, all cement production lines are equipped with advanced waste heat power system
- By New Suspended Preheater (NSP) cement production line and low temperature waste heat power system, reduction in remnant heat can retrieve 240 million units of electric power and thereby saving 76,000 tonnes of standard coal, equivalent to the annual electricity consumption for 59,000 households in Mainland China



# Corporate Social Responsibilities

# Corporate Social Responsibilities

Upholding the belief that "giving back to the society from which one is benefitted", K. Wah Group is committed to supporting various initiatives, such as charity, education, culture and sports, environmental protection, and promoting staff's well-being and volunteerism, to enhance its positive impact on people and communities, and build a sustainable environment



# Engendering the country through education

With the belief of "education engenders a strong country", K. Wah Group sponsors universities in Mainland China, Hong Kong and overseas to establish scholarships, build teaching facilities, support research, promote academic exchange, enhance educational facilities and nurture talent development for the community. Recent major philanthropy projects include:

Mainland China	Ministry of Education of PRC - construction of 122 primary and secondary schools in seven provinces
	China Europe International Business School, Beijing - Lui Che Woo Lecture Theatre
	Fudan University, Shanghai - Member of the Board of Directors for over 20 years, supporting the construction of Lui Che Woo Hall of Guanghua Building, Lui Che Woo Building and other teaching facilities, sponsoring the Chinese MBA programme in Hong Kong
	Shanghai Jiao Tong University – in support of the development of “Lui Che Woo Science Park” as the new campus of Shanghai Jiao Tong University in Zhangjiang
	Shanghai Jiao Tong University - K. Wah City Governance Research Fund in support of the establishment of K. Wah Big Data Center
	Wuyi University, Jiangmen - one of the founding sponsors; construction of Administrative Building, Shiyou Building, Lui Che-woo Technology Building, Lui Che-woo Hall, Student Integrated Service centre, sports facilities, Education Fund, Lui Che-woo Outstanding Entrance Scholarship
	South China University of Technology, Guangzhou - Lui Che Woo Scholarship
	Nanjing University - sports facilities
	Guangzhou Huadu District Xinya Street Jiaying School and K. Wah Education Fund
	Virya Foundation - sponsoring university students in rural villages in Mainland China to complete four to five years of undergraduate programmes
	Guangzhou Education Fund and Guangxi Education Foundation for the Underprivileged
	Peking University, Beijing - appointed as Honorary Trustee; setting up the Lui Che Woo School of Life Sciences Fund to support the development of the School of Life Sciences and the construction of a new Life Sciences research building to be named as the “Lui Che Woo Building”
	Tsinghua University, Beijing - funded the construction of two new blocks named as “Lui Che Woo Pharmaceutical Sciences Building” & “Lui Che Woo Medical Sciences Building” at the Biomedical Sciences Building to support the development of medical, pharmaceutical science and other related disciplines of the University

# Engendering the country through education

Hong Kong	The Chinese University of Hong Kong - Lui Che Woo Institute of Innovative Medicine, Lui Che Woo Clinical Sciences Building, Dr Lui Che Woo Distinguished Professorship Scheme, Lui Che Woo Distinguished Young Scholars Award, Lui Che Woo Distinguished Young Scholars Research Scholarship, School of Hotel and Tourism Management, Title Sponsor of K. Wah Hotel & Tourism Management Forum
	The Hong Kong Polytechnic University - School of Hotel and Tourism Management “Che-woo Lui Hotel and Tourism Resource Centre”; Lui Che Woo Building, Dr and Mrs Lui Che Woo Centre for the Knee, East-Meets-West in Tele-rehabilitation Centre, K. Wah Scholarship
	The University of Hong Kong - Lui Che Woo Law Library
Macau	The University of Macau - Lui Che Woo College in Hengqin campus, Zhuhai; University Development Foundation
North America	Stanford University, USA - Lui Che Woo Research Laboratory, School of Medicine
	University of California, US - San Francisco Medical School
	University of Pennsylvania, US - General Fund
	California Polytechnic State University, US - General Fund
	Concordia University, Canada - Dr Lui Che Woo Scholarship
	University of Victoria, Canada

# Engendering the country through education

The Chinese University of Hong Kong - establishment of the Lui Che Woo Institute of Innovative Medicine, Lui Che Woo Distinguished Young Scholars Award and Lui Che Woo Distinguished Young Scholars Research Scholarship; supporting the School of Hotel and Tourism Management while exchanging views with faculty members and students



# Engendering the country through education

The Hong Kong Polytechnic University - establishment of the “Che-woo Lui Hotel and Tourism Resource Centre”, Dr and Mrs Lui Che Woo Centre for the Knee, Dr and Mrs Lui Che Woo Tele-rehabilitation Centre; supporting the annual international forum on China Hotel Brand Development; in 2008, the University named a building after Dr Lui Che-woo, in recognition of his longstanding support for the development of the University



# Engendering the country through education

The University of Hong Kong - contribution to the setting up of Lui Che Woo Law Library which was opened in 1997 and 2012 respectively



Unveiling ceremony in 1997



The new Lui Che Woo Law Library at the Centennial Campus of the University of Hong Kong was opened in 2012



The University of Macau, Hengqin Campus, Zhuhai - Lui Che Woo College



China Europe International Business School, Beijing - Lui Che Woo Lecture Theatre



# Engendering the country through education

Donation to the Ministry of Education of PRC to construct 122 primary and secondary schools in seven provinces



Donation to establish Guangzhou Huadu District Xinya Street Jiaxing School and "K. Wah Education Fund"



Wuyi University, Jiangmen - one of the founding sponsors; construction of conference & lecture hall, teaching and science buildings



# Engendering the country through education

Fudan University, Shanghai - support of the procurement of computer equipment, construction of Lui Che Woo Hall of Guanghua Building and renovation of Lui Che Woo Building; sponsoring the Chinese MBA programme in Hong Kong



Lui Che Woo Hall



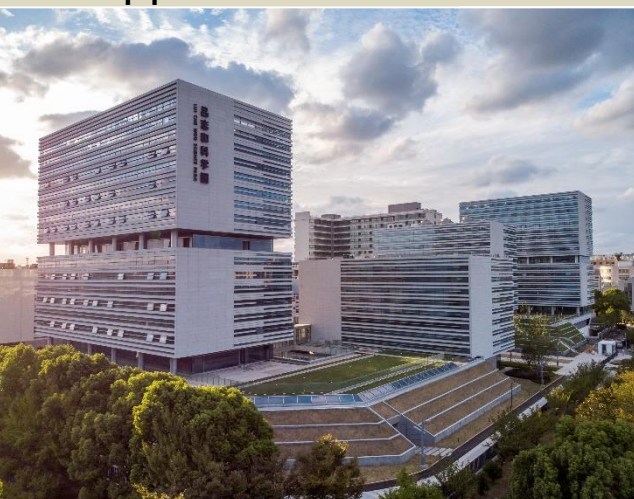
The opening ceremony of the Chinese Fudan MBA programme in Hong Kong in 2013



The unveiling ceremony of the newly renovated historical building complex, renamed Lui Che Woo Building, was held in 2013, with an aim to provide a better teaching and administrative environment

# Engendering the country through education

Shanghai Jiao Tong University - in support of the development of “Lui Che Woo Science Park” as the new campus of Shanghai Jiao Tong University in Zhangjiang  
Shanghai Jiao Tong University - K. Wah City Governance Research Fund in support of the establishment of K. Wah Big Data Center



# Engendering the country through education

Peking University, Beijing - appointed as Honorary Trustee; setting up the Lui Che Woo School of Life Sciences Fund to support the development of the School of Life Sciences and the construction of a new Life Sciences research building to be named as the “Lui Che Woo Building”



Prof Wu Hong, Dean of the School of Life Sciences, 呂志和博士, presented the calligraphy written by the students and teachers from the School of Life Sciences to Dr Lui Che-woo.



“LUI Che Woo Building” has started its operation in 2018.



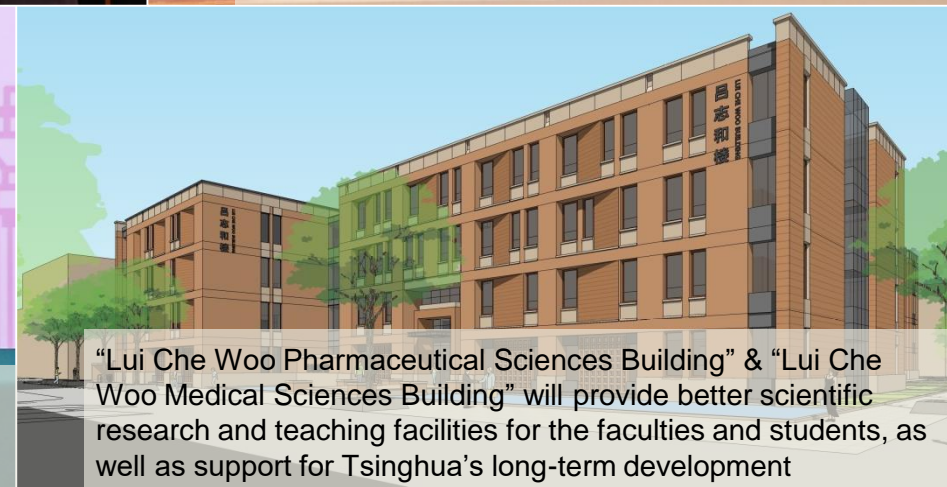
Dr Lui Che-woo and Mrs Lui, Mr Lawrence Lui Yiu Nam, representatives of LUI Che Woo Charity, Prof Lin Jianhua, Prof Xu Zhihong and Prof Wu Hong officiated at the unveiling ceremony of the “Lui Che Woo Building”.

# Engendering the country through education

Tsinghua University, Beijing - funded the construction of two new blocks named as “Lui Che Woo Pharmaceutical Sciences Building” & “Lui Che Woo Medical Sciences Building” at the Biomedical Sciences Building, which are set to provide better research and teaching facilities for the faculties and students and support the development of medical, pharmaceutical science and other related disciplines of the University

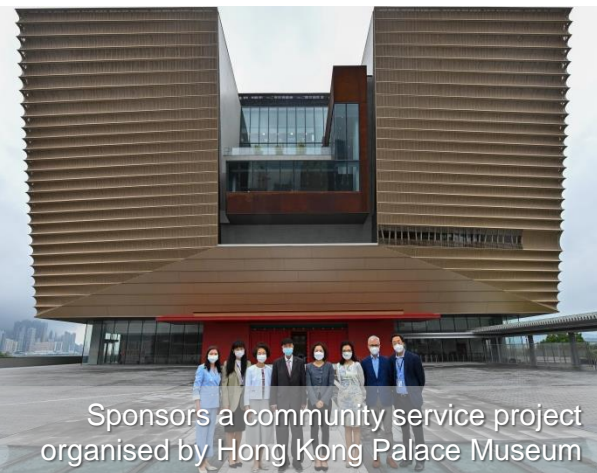


(From left to right) Prof Yang Bin (Vice President of Tsinghua University), Dr Lui Che-woo (Chairman of K. Wah Group and Director of LUI Che Woo Charity), and Prof Chen Xu (Chancellor of Tsinghua University)



# Promoting arts and sports to enhance cultural interaction

As a sponsor of Opera Hong Kong to promote opera art and its popularity in the community



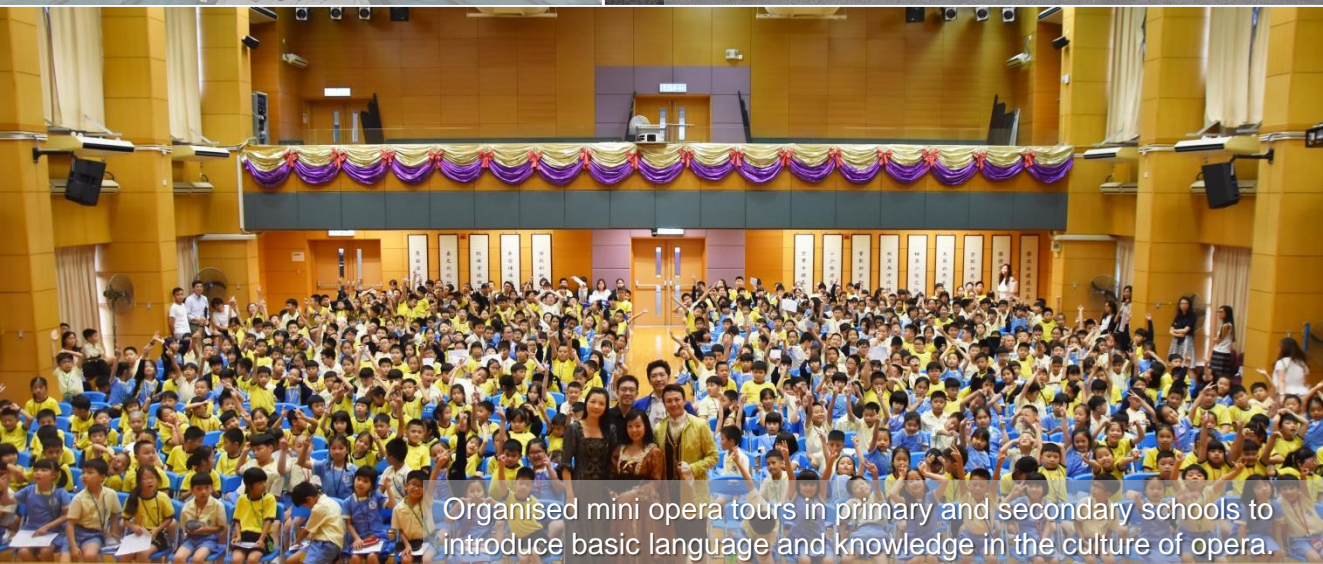
Sponsors a community service project organised by Hong Kong Palace Museum



Title sponsor of Verdi's masterpiece *Rigoletto*, presented by Opera Hong Kong



Garners Hong Kong Arts Development Awards 2017 "Award for Arts Sponsorship"



Organised mini opera tours in primary and secondary schools to introduce basic language and knowledge in the culture of opera.



Title sponsor of K. Wah Opera Hong Kong Summer Camp 2019 performance *The Music Man Jr.*

# Promoting arts and sports to enhance cultural interaction

Sponsored opera performances *Aida* and *Turandot* in Hong Kong and the 2005 New Year's Gala of Hong Kong Philharmonic Orchestra (HKPO)

Sponsored a cross-strait photo and painting exhibition and title sponsored the GEG Macau Cup – Youth National Education Competition for 15 consecutive years

Introduced "Grace Kelly, from Hollywood to Monaco" Exhibition to Macau



Sponsored the performance of *Aida*



2005 New Year's Gala of HKPO in celebration of K. Wah Group's 50<sup>th</sup> anniversary



KWGH sponsored and co-organized a painting and calligraphy exhibition in celebration of the 20th anniversary the HKSAR



Unveiled the Exhibition "GRACE KELLY: From Hollywood to Monaco – Artists' Tributes"



Title sponsored the "GEG Macau Cup – 15th Youth National Education Competition"



GEG Invites Olympic Gold Medalists to Sharing Session with Youths

# Promoting arts and sports to enhance cultural interaction

Supports international sports events with keen participation in various recreation and sports programme, and encourages youngsters to seize the opportunities in GBA



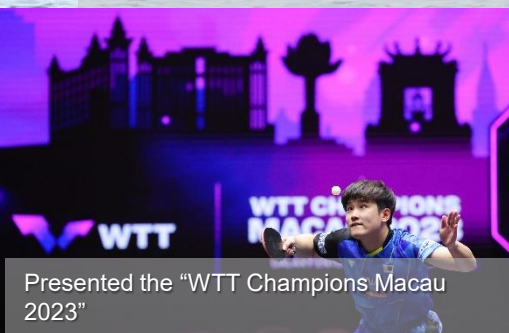
Participant of Macau International Dragon Boat Races and Stanley International Dragon Boat Championships for 17 and 5 consecutive years respectively



Mainland workplace culture sharing session



GEG Supports "Art Macao" with "BE@RBRICK MACAU - World's First Immersive BE@RBRICK Art Exhibition" at Galaxy Macau™



Presented the "WTT Champions Macao 2023"



Major sponsor of the 70th Macau Grand Prix



Title sponsor and joint organizer of the "2023 Galaxy Entertainment Macao International Marathon"



Pok Oi Cycle for Millions



Welcomed delegation of China's Olympic medalists to Hong Kong



Principal Sponsor of UNICEF Charity Run 2015

# Spreading love and care to the needy

Supports charitable organisations and helps the needy



Donate to TWGHs for setting up medical mask production cleanroom



Donate to Henan Province to support flood relief efforts



Mother's Day celebration with St. James Settlement



Distribute caring kits to underprivileged families



Distribute gift packs to the needy



GEG supports International Day for the Elderly



Spread love and care with "Lo Pan Rice"



GEG supports Tung Sin Tong's fundraising campaign for the 20th consecutive year



Organise Charity Walk with ELCHK Tai Wo Integrated Youth Service Centre

# Going green for sustainability

Promotes environmental awareness for a green community



Green Power Hike



WWF Walk for Nature 2019



Pave green road



Invite GBA Youths for Sustainability Facilities Tour



Walk for The Green Earth 2019



Organize a seminar on "dual carbon goals" for GEG team members



Beach cleaning



Sponsored the Pearl River Estuary Challenge – Hong Kong Macau Rowing Expedition by the Chinese University of Hong Kong to support the conservation of Chinese white dolphins



PATA Travel Mart 2023

GEG receives PATA Gold Award for Climate Change



# Thank you

**Disclaimer:** The information materials, drawings and photos of the developments (inclusive of the developments under construction) as provided in this Corporate Presentation are provided by K. Wah Group for the purpose of presentation of its scope of business (please refer to the sales brochures for details of the respective developments) and do not constitute and shall not be construed as constituting any offer, representation, warranty, covenant or contractual term whether expressed or implied. No publishing or transfer to any third party is allowed without the prior written consent of the relevant members of K. Wah Group and the respective vendors as stated in the sales brochures of the respective developments.



Follow us on

Facebook



WeChat



LinkedIn



Youtube

